

Let's get started!

808 SHOX BT headphones give you two ways to enjoy your own personal concert: wirelessly and wired. This guide shows you how to get both set up.

Unpack

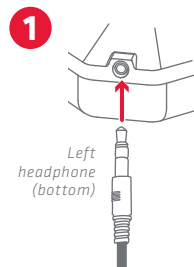
Make sure you have the following items in your 808 SHOX BT package:

- 808 SHOX BT headphones
- Audio cable with inline mic and controls
- USB charging cable

If you have any questions about this product, visit 808Audio.com or call our toll-free help line at 1-800-732-6866.

SHOX BT Wired: Listen right away!

1



Plug in the headphones

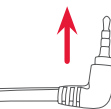
Plug the included audio cable into the jack on the bottom of the left headphone.

2



Connect to your phone

Plug the other end into the headphone jack on your phone.



The audio cord provides inline push-to-talk and play/pause control for select mobile phones and other electronics.

Here's how it works:

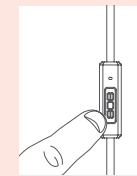
To play/pause music: Single click.

To skip to the next song: Quick double click.

To go back to the previous song: Quick triple click.

To answer/end a call: Single click.

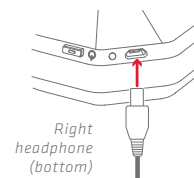
Please note that not all functions work with all brands and models of phones. Each phone's user interface works differently—see the user manual that came with your phone for more information.



SHOX BT Wireless

1 Charge up the headphones

Before you start using your headphones wirelessly, you need to charge their built-in battery.



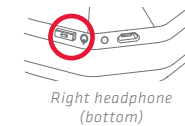
Plug the included USB charging cable into the charging jack on the bottom of the right headphone.

Plug the other end of the charging cable into a USB power source (like a computer or a USB charger).


The charging/pairing indicator next to the charging jack turns red while the headphones are charging. It turns off when the headphones are fully charged.

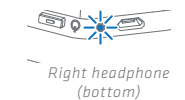


2 Turn on the headphones



Unplug the USB charging cable when the headphones are charged.

Press and hold the  button on the bottom of the right headphone for 3 seconds to turn the headphones on.



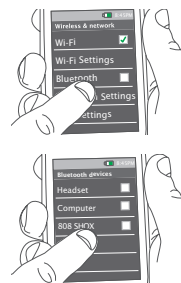
The headphones beep and the pairing/charging indicator next to the charging port begins blinking rapidly.

IMPORTANT: If you've previously paired your phone or other Bluetooth device with these headphones, the headphones will automatically attempt to reconnect to that device when you turn them on. If you want to pair to a new device, make sure the previously paired device is either out of range or has Bluetooth turned off. Then turn the headphones off and on again to put the headphones in pairing mode. Once the pairing/charging indicator on the right headphone starts blinking, go to step 3 to pair and connect.

Instructions continue on the other side...

SHOX BT Wireless (continued)

3 Pair + Connect



Enable Bluetooth on your smartphone or other device.

Choose **808 Shox** from the pairing options on your smartphone. (If it's not in the list, choose "Scan" from your phone's Bluetooth menu.)

The headphones beep when the process is complete. The pairing indicator on the right headphone turns solid blue.

Note: The process of enabling Bluetooth and connecting varies from device to device. See your device's owners manual for more information and specific instructions.

Bluetooth Wireless Connection Tips

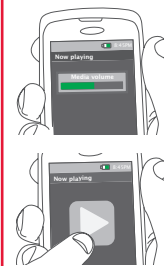
- Make sure the Bluetooth capability of your device is turned on.
- Make sure there's nothing plugged into the jack on the bottom of the left headphone when you're trying to use Bluetooth.
- The headphone's Bluetooth wireless connection works up to a range of roughly 33 feet (10 meters). This range may vary, however, based on other factors, such as room layout, wall material, obstacles, your device's Bluetooth performance, etc. If you're having problems connecting to the headphones, move closer to your phone.
- Make sure your device supports audio transfer A2DP.
- If your device asks you for a password to connect, use "0000".

To pair the headphones again

After turning your headphones back on, they automatically attempt to reconnect to the last connected device. If the last connected device is not available, the headphones will enter pairing mode and be ready to pair to a new or different device.

Using SHOX BT Wirelessly

Listening to music



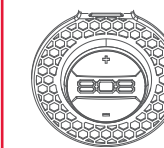
Set your device's volume for music to 50%.

Note: This is to make sure the sound from the headphones isn't too loud when you start streaming.

Start playing music or other audio on your device. Within seconds, the headphones start streaming the audio wirelessly via Bluetooth.

Note: Bluetooth playback is disabled when something is connected to the jack on the bottom of the left headphone. To use Bluetooth, make sure nothing's plugged in to this jack.

Controlling playback and volume



Right headphone (side)

The side of the right headphone has a control panel that lets you control music playback and volume wirelessly.

To play/pause music: Press the **808** logo on the right headphone.

To adjust volume: Press the **+** (above the 808) or **-** (below the 808) on the right headphone.

To go to the previous/next song: Press and hold the **+** or **-** on the right headphone.

Answering/ending phone calls

These headphones have a built-in microphone, so you can use them for phone calls. Your phone will ring through the headphones when you're receiving a call. You can answer and end the call wirelessly from your headphones using the controls on the right headphone.

For best results during phone calls, use the cable with inline mic. In most cases, this cable's microphone will provide better performance than the headphones' built-in mic.

To answer or end a phone call: Press the **808** logo on the right headphone.

IMPORTANT: Not all phones support playback control and phone answer/end control. Check your phone's user manual for more information if you're having trouble with these functions.



quick start guide